

BUSINESS EXERCISE

Friends form
fitness line.

PAGE A10



GROWING FIELD

Reception marks
book on island
gardens.

PAGE A8



HOLIDAY GREENERY

Garden Club ready
for Christmas
Boutique.

PAGE B1

Palm Beach Daily News

THE SHINY SHEET®

ESTABLISHED 1897

THE LEADER IN COVERING THE ISLAND



SUNDAY, DECEMBER 2, 2018

\$3.00

Palm Beachers mourn loss of George H.W. Bush

By Shannon Donnelly
Daily News Society Editor

When Palm Beach resident Frances Fisher, who worked in the West Wing of the White House when George H.W. Bush sat in the Oval Office, was asked about her former boss, she was silent for bit, then sighed softly and said "He was wonderful. He was really, really wonderful." Fisher was among the many



Fisher

Palm Beachers mourning the loss Saturday of the man everybody called "Poppy." Except when they called him "Mr. President." Although the former president spent most of his Florida time in Boca Grande, he was considered by many Palm Beachers to be an honorary hometown boy because of his mother's ties to the island and her residence in nearby Hobe Sound. Mr. Bush died late Friday at 94 at his home in Houston. "I have this tremendous sense of gravity about the loss of President Bush, not

just personally but politically. He had a profound respect for his fellow man, even those with whom he disagreed," said Fisher, who served the Bush administration as special assistant to White House Counsel C. Boyden Gray. "As a young professional woman in the White House, President Bush truly set the example of gracious leadership for me and the others with me ... He was deeply human and knew that his words could either divide or unite."

See BUSH, A6



George and Barbara Bush shake hands at Club Colette in March 1994. The former president died late Friday at 94 at his home in Houston. [DAILY NEWS FILE PHOTO]

SOARING HIGH TO RAISE AWARENESS



Krysten Albertina flies a kite Saturday at Midtown Beach. Albertina, who is a staff member for Christ Fellowship's Hope For Freedom group, said the organization was giving away kites to raise awareness of human trafficking in Palm Beach County. [MELISSA MCCARTHY/PALMBEACHDAILYNEWS.COM]

2018 hurricane season: Deadly storms, destroyed communities

Hurricanes' growth, intensities flummoxed forecasters

By Kimberly Miller
Daily News Staff Writer

The 2018 hurricane season began like a lazy river, a handful of circles spinning in an atmosphere still

sleepy from spring. Only Subtropical Storm Alberto made contact with the United States, splashing into Laguna Beach, at the end of May before the calendar even noted the official

June 1 start date of storm season. Through August, it was called the "season of slop," seemingly confirming forecasts for below average cyclonic activity. But then September came, the

See SEASON, A4

Most island voters backed tax cap extension

By William Kelly and Darrell Hofheinz
Daily News Staff Writers

Palm Beach voters in the recent election overwhelmingly embraced Amendment 2 – the measure that made permanent the tax cap for non-homesteaded properties. The measure passed by lopsided margins in all seven of the town's precincts. The town-wide tally was 3,000-1,051, with 'yes' votes amounting to 78.8 percent of ballots cast.

Statewide, it passed by 5.16 million votes to 2.6 million, or 66 to 33 percent. A 60-percent threshold was required for approval because it is a constitutional amendment.

Real estate broker John D. Pinson, a former president of the Palm Beach Board of Realtors, said passage of Amendment 2 will help stabilize the real estate market. Since the 1920s, Florida has had an up-and-down history with real estate. The cap on tax increases protects owners of non-homesteaded properties against sharp fluctuations in values.

"It's like blood pressure medicine for taxes," Pinson said.

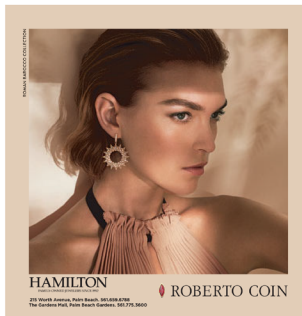
The amendment makes permanent an existing cap that helps limit annual increases in property taxes for owners of non-homesteaded properties. The cap, in place for the last decade, was set to expire Jan. 1 if Amendment 2 hadn't passed.

The cap prevents a non-homesteaded property's assessed value – the amount used to calculate taxes – from rising beyond 10 percent a year. If the cap had expired, properties without homestead exemptions would have been taxed at their

See RESULTS, A4

Santa is already in town

Fashion Santa (a.k.a. Richard Adler) walks with several children to the photo booth Friday at Royal Poinciana Plaza's Holiday Reveal. See more photos at PalmBeachDailyNews.com. [MELANIE BELL/PALMBEACH DAILY NEWS.COM]



Volume 123, Issue 56
32 pages
©2018, GateHouse Media

Classified.....B16
Crossword.....B17
Horoscope.....B2

Movie Times.....B12
Opinion.....A12
Social Calendar.....B6

TODAY
Mostly cloudy
84°/75°

MONDAY
Mostly sunny
84°/71°

TUESDAY
T'storms
81°/61°



Palm Beach Marathon to close Flagler Memorial Bridge today

The Flagler Memorial Bridge will be closed until 10:30 a.m. today during the running of the Palm Beach Marathon.

Traffic will be diverted to the Royal Park Bridge. Expect slight delays on the middle bridge during this time, town officials said. Thousands of runners are expected to run in the annual race. Marathoners will begin by running north from near the Meyer Amphitheatre, although

nearly the entire route is south of the starting line. Most of the route remains on Flagler Drive and Olive Avenue.

Earlier this year, the Town Council denied a request to have the marathon be run partially along the Lake Trail. Last year, about 3,500 runners crossed the Flagler Memorial Bridge, ran down the Lake Trail and exited at the Royal Park Bridge.



Runners start the Palm Beach Marathon along Flagler Drive in downtown West Palm Beach in 2015. (RICHARD GRAULICH / DAILY NEWS FILE PHOTO)

Today

SHINY SHOTS



Linda Olson and John David Corey attend the Palm Beach Civic Association's 75th anniversary celebration Nov. 26 at the Royal Poinciana Plaza. For more Shiny Shots, see PalmBeachDailyNews.com.

THE WEATHER

Today will be mostly cloudy with a chance of showers; the high will be near 84 degrees with the low around 75, according to the National Weather Service in Miami. Winds will be out of the south between 11 and 14 mph. The marine forecast calls for seas between 2 and 3 feet, and south winds between 10 and 15 knots. **Lake Worth Inlet:** High tide will be at 4:38 p.m. with low tide at 10:10 a.m. and 10:51 p.m. **Sunrise:** 6:52 a.m. **Sunset:** 5:26 p.m.

TOP PICKS

Holiday activities: Carlo DeVito will speak on "Dickens and Twain: The Yuletide Writings and Traditions of the World's Greatest Writers" at 2 p.m. today at The Flagler Museum, One Whitehall Way. The museum's Christmas tree lighting festivities will begin after that at 5 p.m. Call 655-2833 for more information.



A large crowd packs the Grand Hall of the Flagler Museum to see members of the Flagler family light the Christmas Tree in 2017. The museum's Christmas tree lighting festivities will begin at 3 p.m. today. (DAMON HIGGINS / THE PALM BEACH DAILY NEWS)

PALMBEACHDAILYNEWS.COM

You can share your photos from social events, parties, family trips and other occasions by uploading them to Shiny Shots, the free online gallery at PalmBeachDailyNews.com. Our website carries all the stories, listings and photos that appear in the print editions, plus special Web-only content such as blogs and videos.

LOOK FOR THE SHINY SHEET

On Facebook at facebook.com/shinysheet or just search for "Palm Beach Daily News." On Twitter, we're @ShinySheet. And, of course, at PalmBeachDailyNews.com.

Informal utility meetings set for Monday and Friday

The Town of Palm Beach will hold two informal public meetings, one Monday and another Friday, with construction crews working on the underground utilities project.

On Monday, crew members will discuss the North End phase at 8 a.m. at Annie's Dock at North Ocean Boulevard and East Inlet Drive.

On Friday, Bo Huggins, superintendent of Whiting-Turner, will hold "A Cup of Joe With Bo" to discuss the South

End portion of the project. The hourlong meeting will begin at 8 a.m. at the South Fire-Rescue Station, 2185 S. Ocean Blvd.

The idea behind the talks is to try to keep residents up to date and to answer questions in an informal setting, town officials have said. Doughnuts and coffee will be served at both meetings.

The project is envisioned in eight phases over roughly nine years at a cost of around \$90 million.



Town Engineer Patricia Strayer, center, addresses residents gathered at Annie's Dock, by the intersection of North Ocean Boulevard and East Inlet Drive, where the town held a special meeting in November 2017 to inform residents about the underground utilities project. (JENNIS WATERS / DAILY NEWS)

For All Your Nursing Care Needs
It's the Personal Touch that Makes the Difference

Boca Nursing Services, Inc.
Of Palm Beach

Offering Quality Private Duty Nursing Care and Care Management Services since 1993
Available 24 Hours A Day

- Registered Nurses
- Licensed Practical Nurses
- Certified Nursing Assistants
- Home Health Aides
- Physical Therapy
- Companions
- Live Ins
- Homemakers
- Speech Therapy
- Occupational Therapy

Serving Palm Beach, Broward, Martin & St. Lucie Counties
www.bocanursing.com

342 E. Palm Beach Park Rd., Suites 1 & 2 Boca Raton, FL 33432 Tel. (561) 347-7566 Fax (561) 833-3460

255 Sunrise Ave., Suite 200 Palm Beach, FL 33480 Tel. (561) 833-3430 Fax (561) 833-3460

What is Enlightenment?
with Dr. Tony Nader MD, PhD, MARR
This Sunday, December 2, 2:00pm – 2:45pm
The Eau Palm Beach Resort and Spa

Dr. Nader has spent the last 40 years probing the deepest truths of life—both as a world-renowned medical doctor and brain researcher and as an expert in Transcendental Meditation, yoga, and consciousness. Dr. Nader will discuss enlightenment, how we can achieve it and share new findings and understandings from modern medicine and quantum physics that will revolutionize your view of the human mind and the world around us.

Hosted By Transcend Palm Beach
(561) 516-0685
info@transcendpalmbeach.org
Complimentary Tickets Available
www.transcendpalmbeach.org/events

Shiny Shots for the iPhone & iPad

SMILE...
you may be on Shiny Shots!

Look for your favorite party photos, event pictures and more.

EXCLUSIVELY AT
PalmBeachDailyNews.com/shinyshots

Palm Beach Daily News
The Inner Circle

Palm Beach Daily News

The Community Newspaper of Palm Beach | Established 1887

TRUDY D. BIRRE
Publisher, Palm Beach Newspapers LLC
Advertising Director
ELIZABETH CLARKE
Editor
SHELLEY ABBY
Managing Editor

The Palm Beach Daily News is completely recyclable.

HOW TO REACH US
The Palm Beach Daily News offices are at 400 Royal Palm Way, Suite 100, Palm Beach, FL 33401-1117. Office hours are from 9 a.m. to 5 p.m. Monday through Friday. After hours, messages may be left on our voice-mail system and will be returned as soon as possible. Here is a list of telephone numbers. All are in Area Code 561. If you don't see the one you need, please call our receptionist at 655-5985.

CIRCULATION
655-5254-7678
Home delivery 655-4623
Toll-free in Florida (800) 466-9277
Mail Service 655-4623

ADVERTISING

Classified 620-3838
Display 620-3832
Legals 620-2106
Classified 620-2106
Customer service assistance is available at 620-4063 from 9 a.m. until 4 p.m. Monday through Friday, from 7 a.m. until 11:30 a.m. Saturday, and from 7:30 a.m. until noon Sunday.

EDITORIAL

News 620-3827
Editorial fax 655-4034
620-3829

SUBSCRIPTION RATES

Home Delivery 52 Weeks: \$311.77
24 Weeks: \$164.41
Single copy (only \$2.00; Sunday \$2.50)
Follow @ShinySheet on Twitter
Like Palm Beach Daily News on Facebook
Follow @PalmBeachDailyNews on Instagram

Palm Beach Daily News, USPS No. 488-680, is published daily except biweekly from the first Sunday in May to the first Sunday in October, by Palm Beach Newspapers LLC at 400 Royal Palm Way, Suite 100, Palm Beach, FL 33401-1117, U.S.A.
Periodical postage paid at West Palm Beach, FL. Postmaster: Send address changes to Palm Beach Daily News, 400 Royal Palm Way, Suite 100, Palm Beach, FL 33401-1117. The "Shiny Sheet" is registered in the U.S. Patent and Trademark Office.

100% Recycled Paper